

# *Symphony*

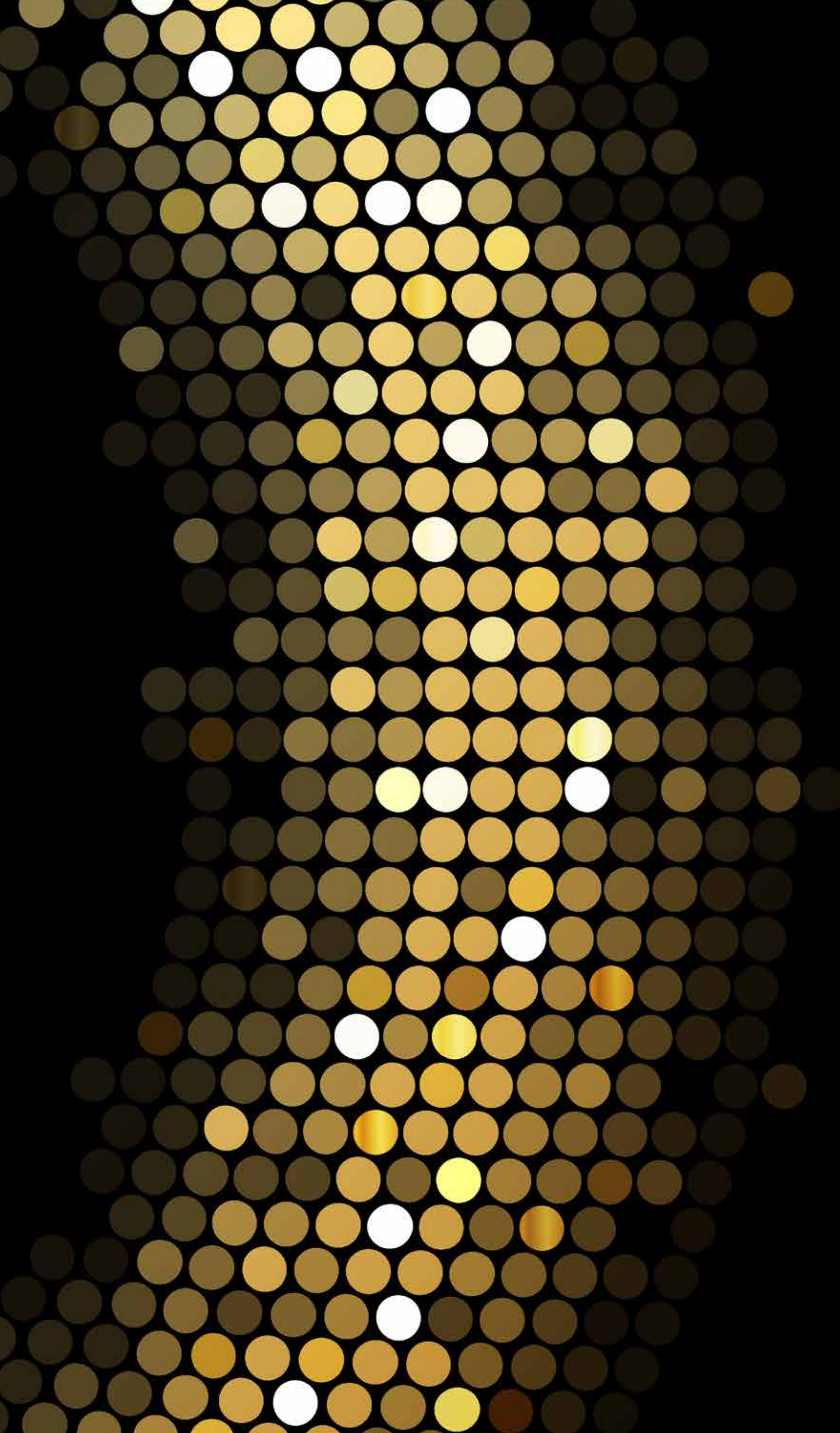
 **ARTGLASS**  
CHANDELIERS FROM BOHEMIA



# ABOUT ARTGLASS

ARTGLASS is a manufacturer of original and design lighting made from high quality materials with a high degree of craftsmanship. ARTGLASS employs over 100 qualified employees and has its own team of progressive designers. ARTGLASS works very closely with renowned Czech glassmakers and world-renowned design studios and offers its clients comprehensive lighting solutions, from designing the concept, consulting and advice, to the assembly.





# *Symphony*

SPECIALLY MADE FOR EUROLUCE 2019

Symphony means harmony, consonance. Each individual lighting fixture in the collection is created through the harmony of each of the individual components that make up the whole piece, combining tradition with a new and innovative lighting design concept.

# Symbiosa

Symbiosa represents a relationship, or coexistence, in this case a mutually beneficial combination of traditional styles in the development of domestic chandelier components. This creates an unconventional lighting fixture with a classic appearance united by crystal elements.

Designed by VERONIKA ŠINDELÁŘOVÁ and JANA CHVOJKOVÁ







# Swing

A simple lighting fixture with an ornamental pattern is inspired by minimised, two-dimensional shapes. It is based on the original sketch of the representation of the hanging object or the bulb itself and its perception in space.







# Amadeus

Music, dance and grace form the essence of Amadeus. With its slim, elegant shape, it completes and brightens every interior.

Designed by MONIKA ŠILHÁNOVÁ





# Luminary

This series of lighting fixtures draws on the power of traditional crystal components, specially applied to allow us to create minimalist, glittering objects as well as complicated installations of multiple shapes.

Designed by LINDA JÚNOVÁ, VERONIKA ŠINDELÁŘOVÁ and JIŘÍ VENCL



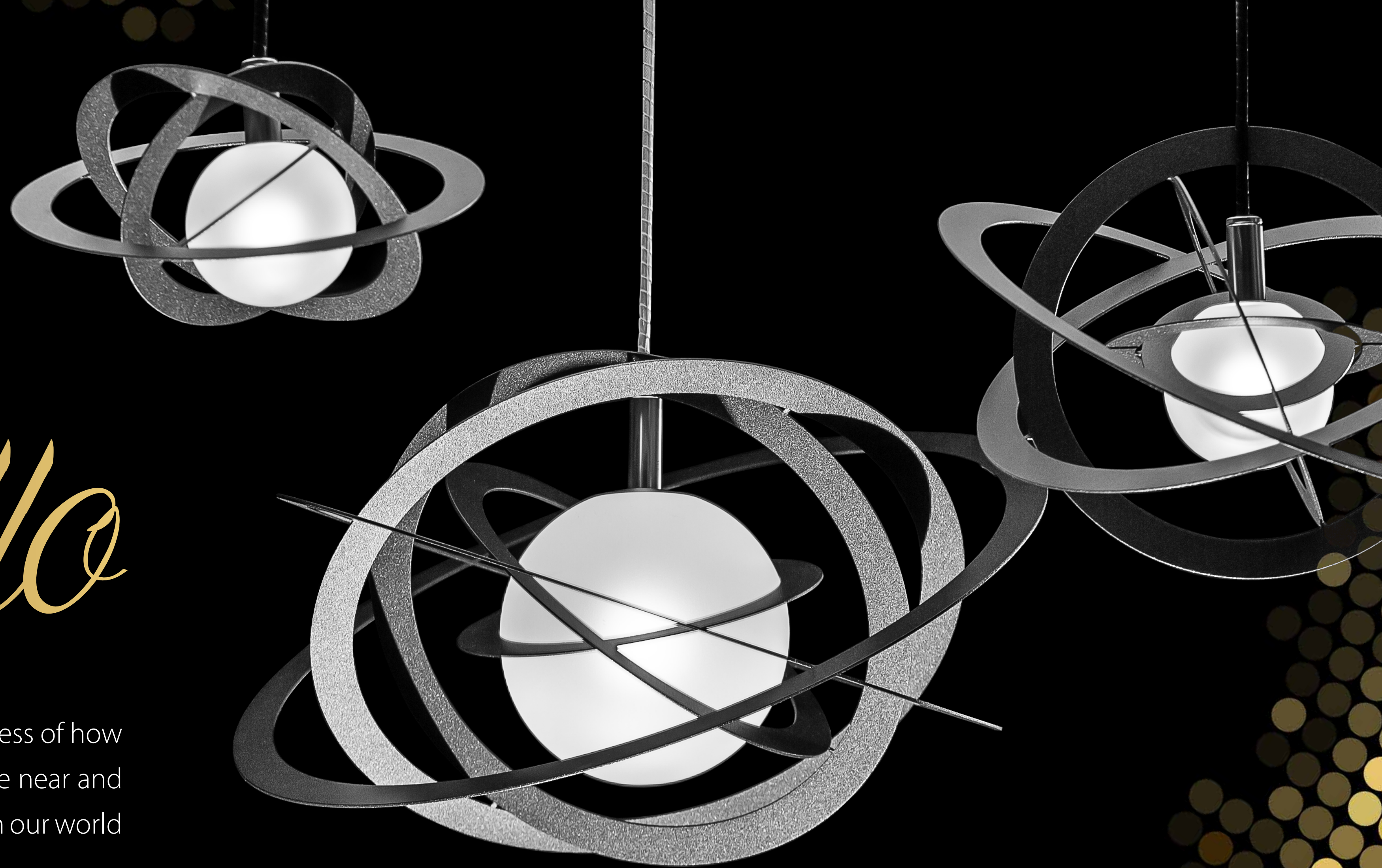




# Aello

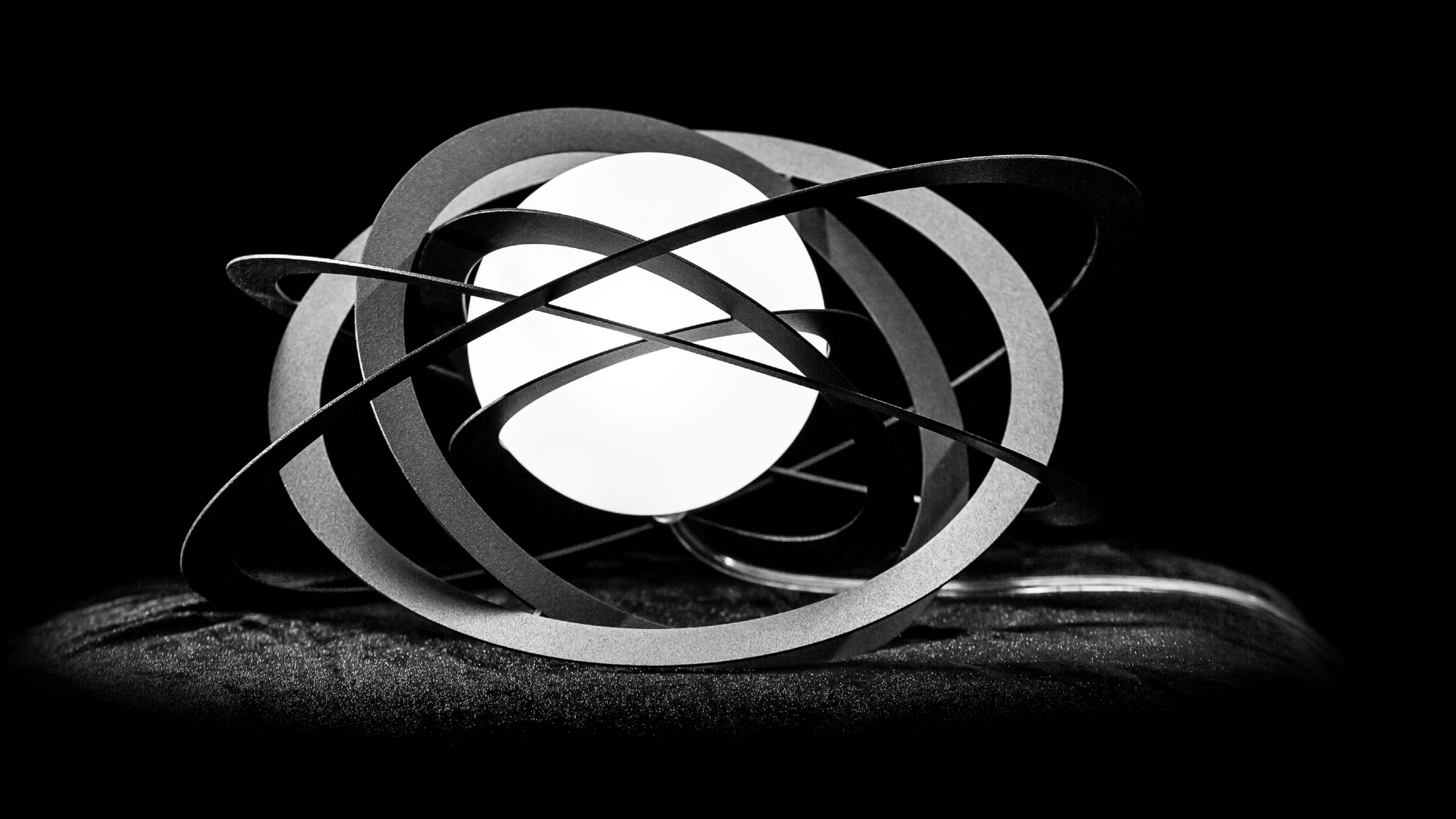
Playful galactic objects bring us an awareness of how the planetary system in outer space can be near and far away. It's just a fraction of the time, when our world felt for us like the centre of the universe.

Designed by PETRA VONDRÁČKOVÁ









# Radin

The romantic lighting concept inspired by the traditional chandelier of Maria Theresa opens our arms to tiny flowers. It invites us to explore the purity and beauty of this tiny pendant.

Designed by JANA CHVOJKOVÁ







# *Primavera*

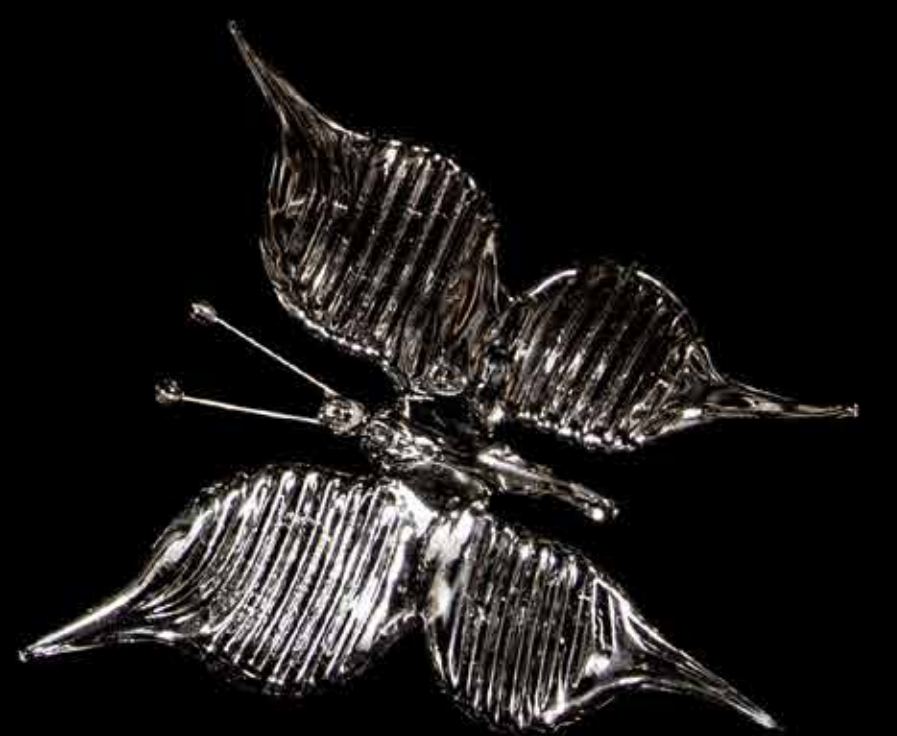
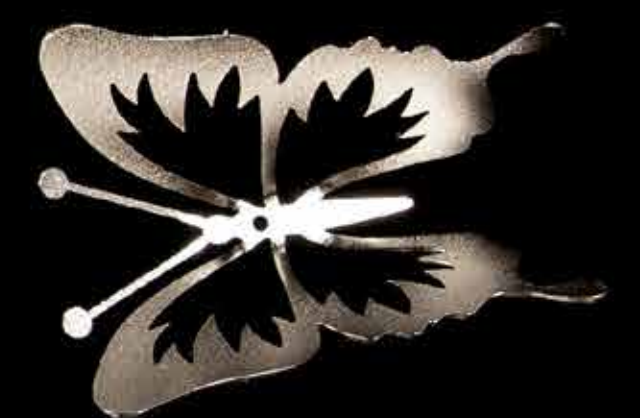
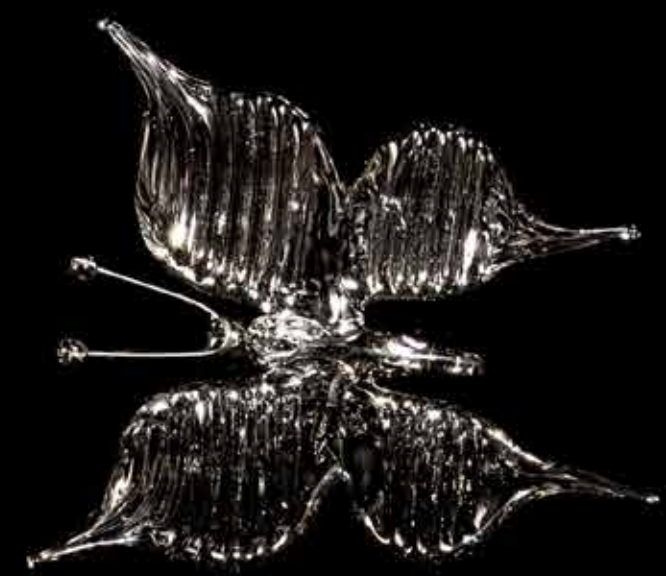
Spring, the symbol of birth and new beginnings. This attribute has accompanied the art world for centuries, from the greatest masters to modern scenes of contemporary artists. The author's concept of spring is obvious to us when looking at these lighting fixtures.

Designed by JANA CHVOJKOVÁ









# Cara

Cara is the journey, the shift in concept: it is a fantastic wild flower that hide the spirit of blooming summer meadows. The basis is a wire construction that carries glass components, the effect elements of the whole design. It is a rich and impressive lighting fixture that does not deny the playfulness and variability of its essence. It is certain to be the star feature in any interior.



Designed by MONIKA ŠILHÁNOVÁ

Cara is from Particles collection.

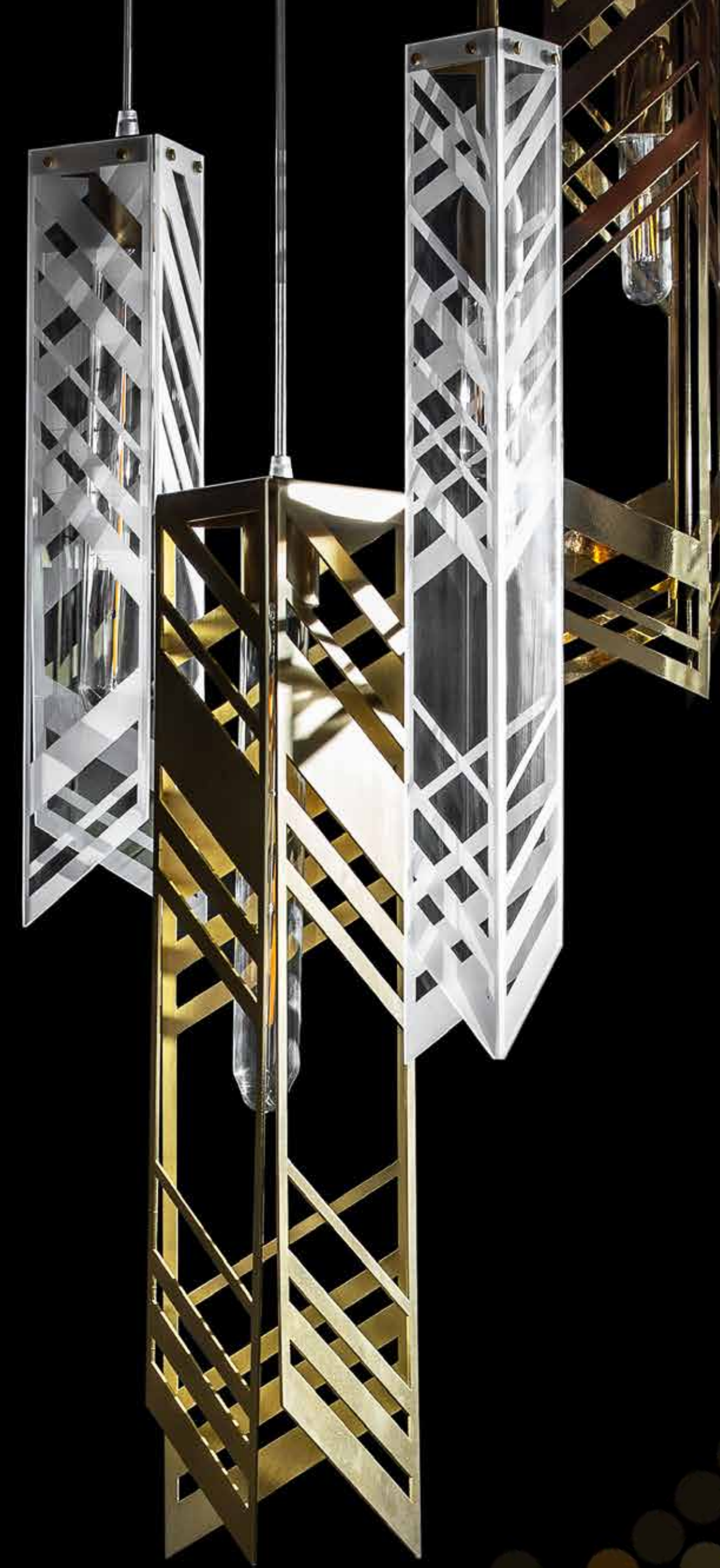




# Manhattan

Manhattan is a ceiling installation inspired by the city's silhouette, a city landscape full of modern skyscrapers. It consists of a number of detailed glass and metal elements that refer to the technical construction of the modern period. The play on individual, triangular-like elements reminiscent of beam construction has an extraordinary charm.

Designed by MONIKA ŠILHÁNOVÁ  
Manhattan is from Particles collection.





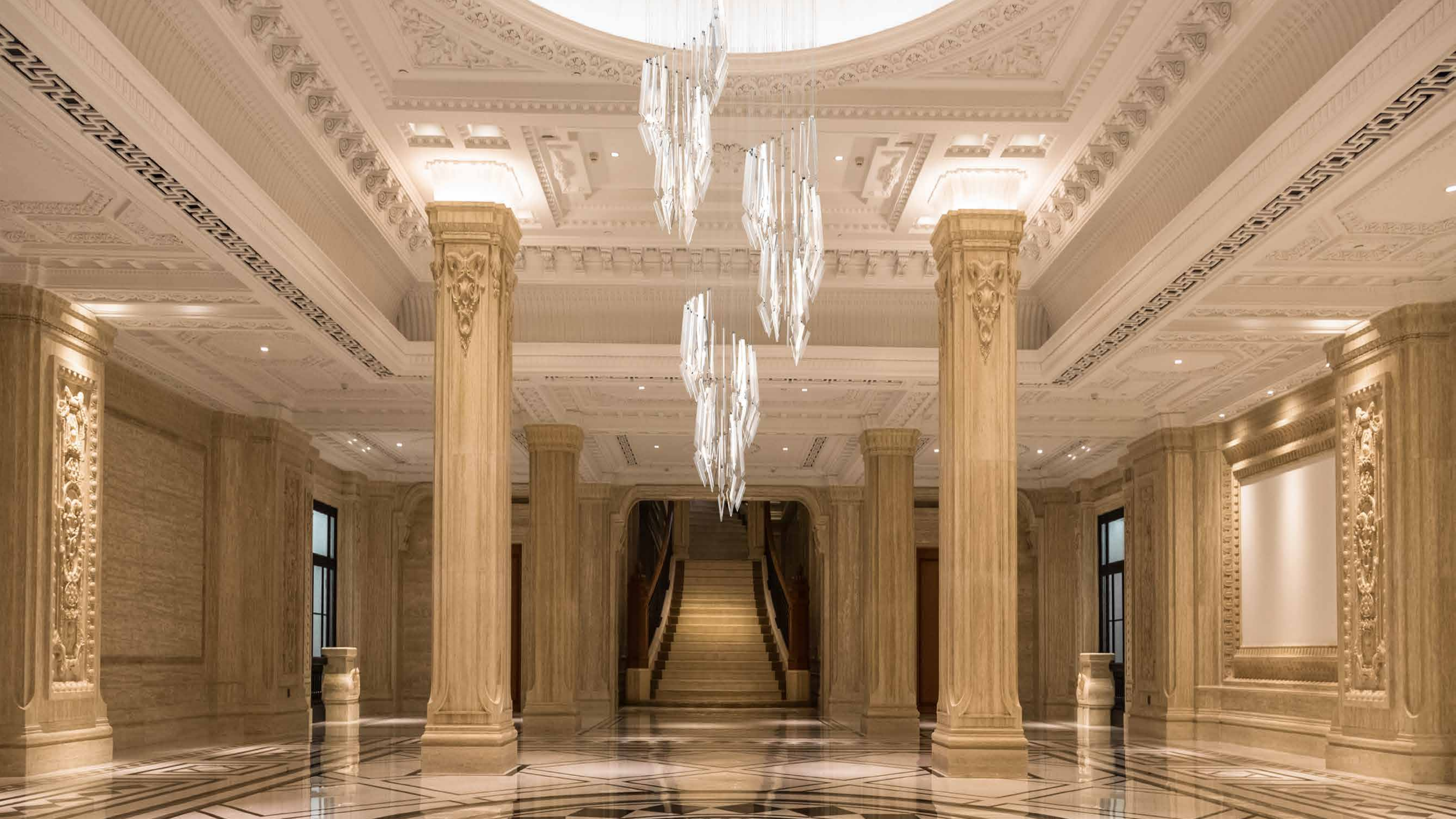


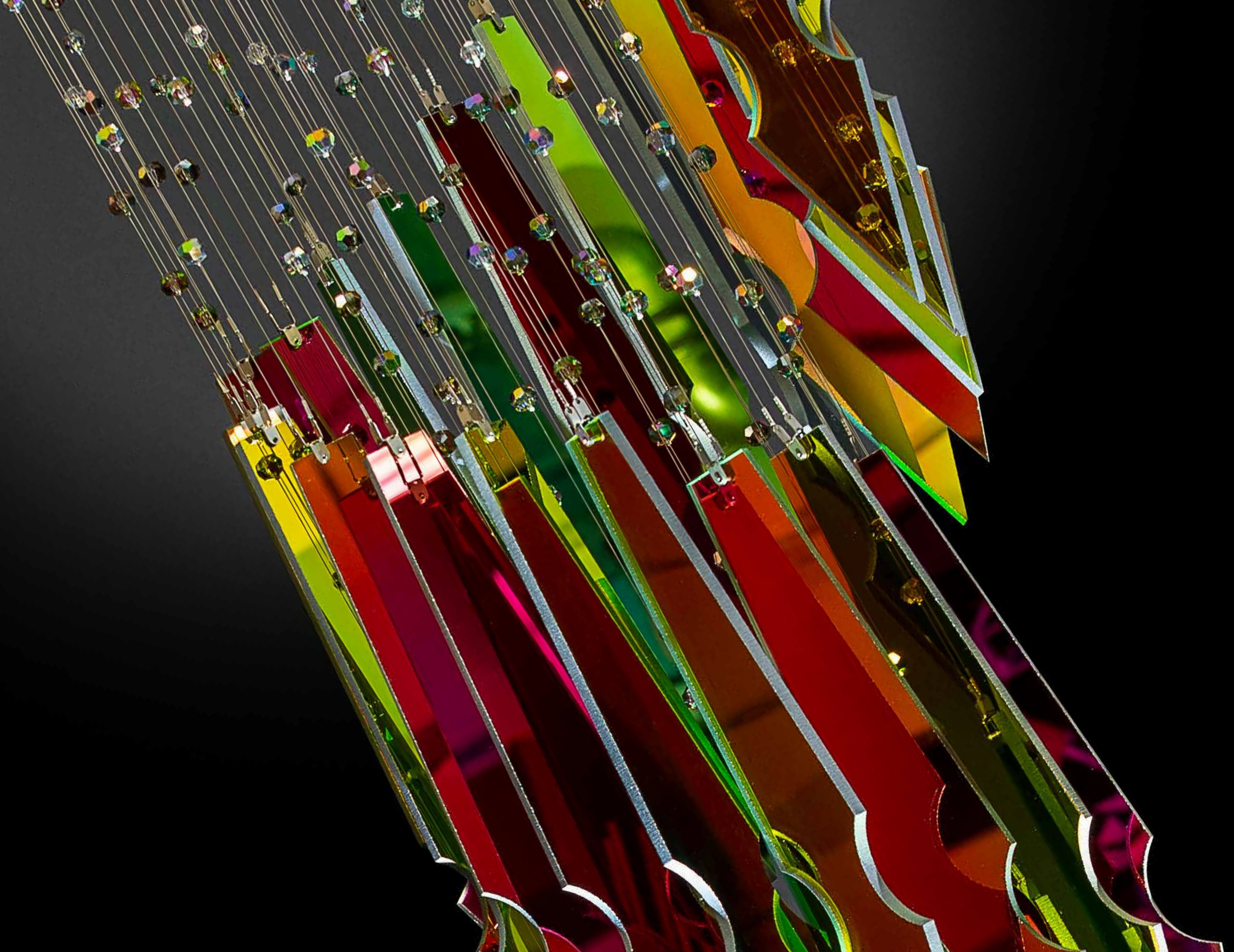
# Verre

A combination of sharp edges with fine and rounded lines. The contrast of these lines is further enhanced by a subtle decor emphasising the shape of each individual glass segment. Precisely hinged segments then form splendid spirals.

Designed by LINDA JÚNOVÁ  
Verre is from Particles collection.











ARTGLASS s.r.o.  
Smetanova 1659/42, 466 01 Jablonec nad Nisou

sales@artglass.cz  
+420 483 369 111, +420 483 369 113  
CZECH REPUBLIC

WWW.ARTGLASS.CZ

*Symphony*